

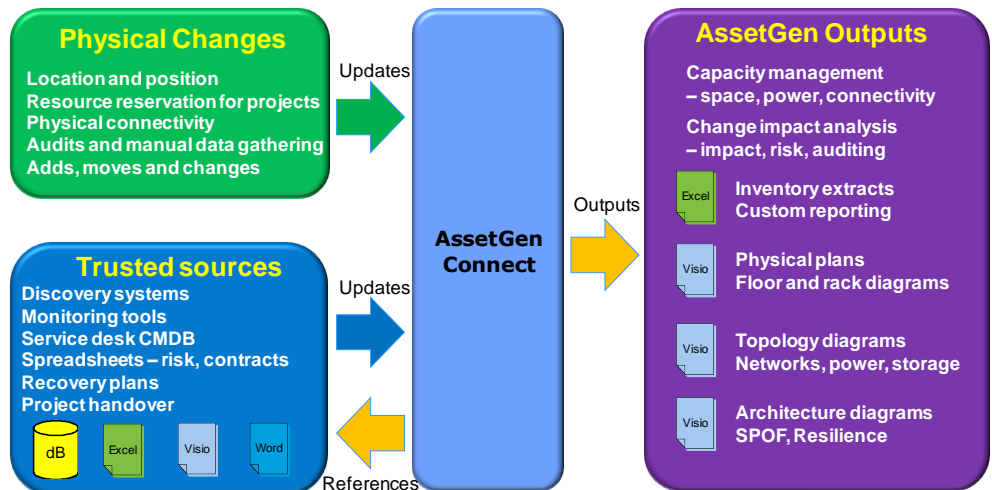
- ❖ IT Inventory, Space and Connectivity Management
- ❖ Automated Visio™ diagramming reduces workload and errors
- ❖ Find any device and it's connectivity (LAN/WAN/SAN/Power) quickly
- ❖ Reduce cost and risk of implementing infrastructure changes

## What is AssetGen Connect?

AssetGen Connect is designed to manage the physical aspects of IT infrastructure and can support data centres, networks, cabling, office buildings, etc. It combines hardware inventory with positioning and connectivity so the location of any hardware component can be easily found, as well as dependencies and single points of failure. AssetGen Connect also automates the production of Visio diagrams of floor plans, racks, networks and architecture views. It complements other information sources such as monitoring tools and workflow systems and trusted sources such as recovery documents, maintenance spreadsheets, etc.

The diagram on the right shows how we combine physical change updates with existing data and produce multiple outputs. A new server install may result in changes to

1. Inventory listings
2. Rack and floor plan capacity
3. Rack layout diagrams
4. Patch panel connections
5. Network switch connections
6. Power strip connections
7. Network diagrams
8. Storage diagrams
9. Domain diagrams
10. Capacity reports
11. Change audit trails



With AssetGen Connect this **one** action would support **all** changes to all these different documentation types – with consistency in data and formatting. The only way to easily maintain complex technical infrastructure documentation that can be trusted!

## Desktop and Server Versions

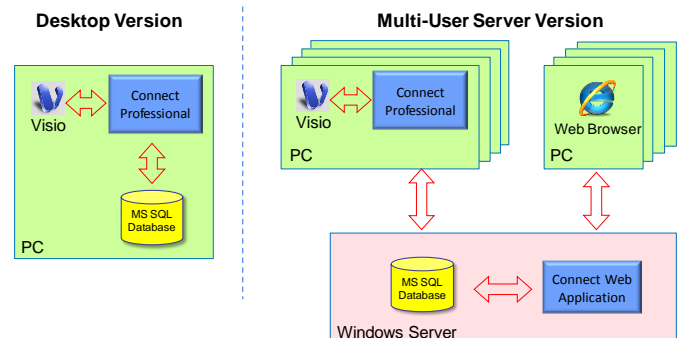
Different versions and licencing options are available to suit many different infrastructure documentation requirements.

### Desktop Version

- Internal teams – network, server, power
- Small and medium IT environments
- Auditing and inventory projects
- Local infrastructure responsibility
- Handover or commissioning documentation

### Server Version – Client and web interfaces

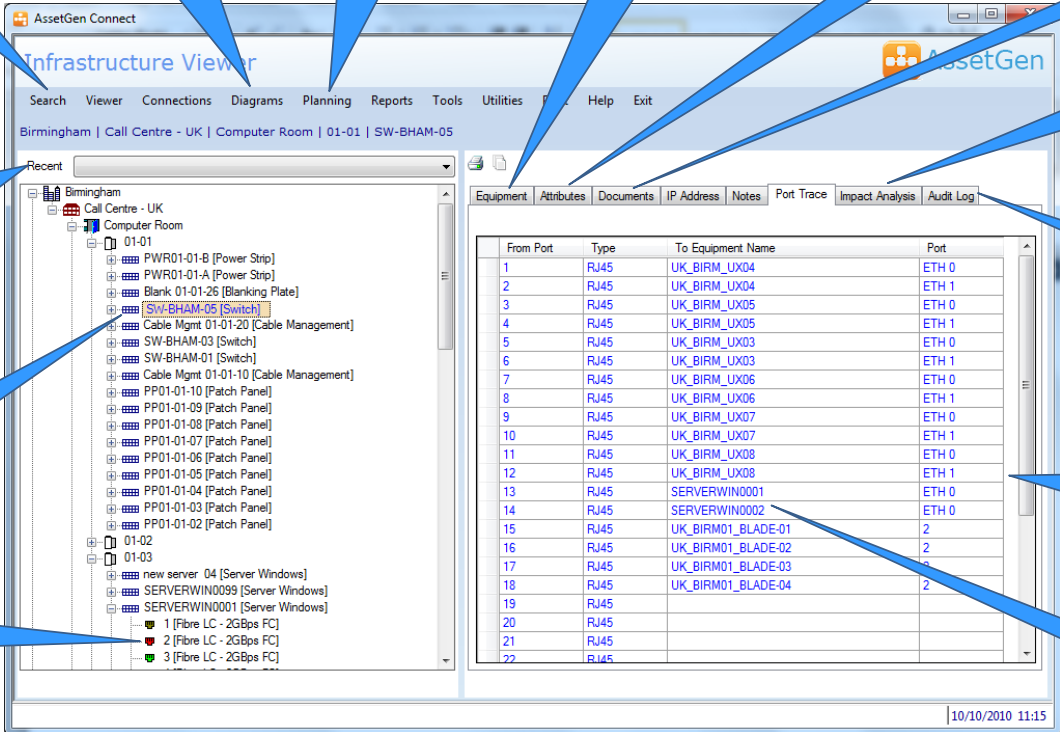
- Data centres, campus and office environments
- NOC (Network Operations Centre) or Operations bridge
- Deployment planning and MAC (moves, adds, changes)
- Infrastructure transformation projects
- Outsourcing and out-tasking where formal change documents are required



The server version includes the Connect Web Interface so multiple users (with sufficient rights) can view and update changes to the infrastructure. Licence options are covered at the end of this datasheet.

## Finding Equipment and Connectivity Quickly

Key to AssetGen Connect is the ability to find equipment and understand connectivity. This screenshot of a network switch shows the location (Rack 01-01) and the end point network connections in one click.



**Search location, type, status, label, attributes, etc**

**Visio diagram creation and maintenance**

**Advanced planning / change impact features**

**Equipment naming, position, status**

**Equipment attribute viewing and updating**

**Recovery plans, photos, trusted documents**

**Business and software change impact**

**Audit trail of all changes to device**

**End point connections from device ports**

**Click on device or port to see more detail**

**MRU (most recently used) list by user login**

**Equipment selected ordered by rack position**

**Ports colour coded for connection status and faults**

From Port	Type	To Equipment Name	Port
1	RJ45	UK_BIRM_UX04	ETH 0
2	RJ45	UK_BIRM_UX04	ETH 1
3	RJ45	UK_BIRM_UX05	ETH 0
4	RJ45	UK_BIRM_UX05	ETH 1
5	RJ45	UK_BIRM_UX03	ETH 0
6	RJ45	UK_BIRM_UX03	ETH 1
7	RJ45	UK_BIRM_UX06	ETH 0
8	RJ45	UK_BIRM_UX06	ETH 1
9	RJ45	UK_BIRM_UX07	ETH 0
10	RJ45	UK_BIRM_UX07	ETH 1
11	RJ45	UK_BIRM_UX08	ETH 0
12	RJ45	UK_BIRM_UX08	ETH 1
13	RJ45	SERVERWIN0001	ETH 0
14	RJ45	SERVERWIN0002	ETH 0
15	RJ45	UK_BIRM01_BLADE-01	2
16	RJ45	UK_BIRM01_BLADE-02	2
17	RJ45	UK_BIRM01_BLADE-03	2
18	RJ45	UK_BIRM01_BLADE-04	2
19	RJ45		
20	RJ45		
21	RJ45		
22	RJ45		

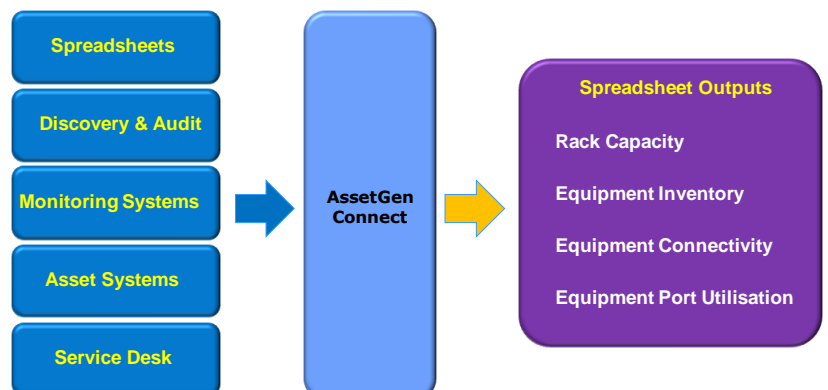
Complex hardware devices such as blade systems, core network switches and Unix systems can be documented within AssetGen for build management. Connectivity options include single path analysis, end to end connections (as above) and full device connectivity with all paths and cable labels. As well as making it easy to find equipment, we can make it simple to check data and power connectivity using the different reporting formats.

## Importing and Exporting Infrastructure Data

We have made it easy to populate and update infrastructure data within AssetGen Connect to cope with occasional and local data updates, as well as automated feeds. All changes to equipment attributes have the date and user details modified automatically. Any changes in data are entered into audit logs for internal controls, as well as guarding against data errors from automated sources.

Infrastructure data can be filtered and exported on a regular or ad hoc basis for project and operational reporting. For instance:

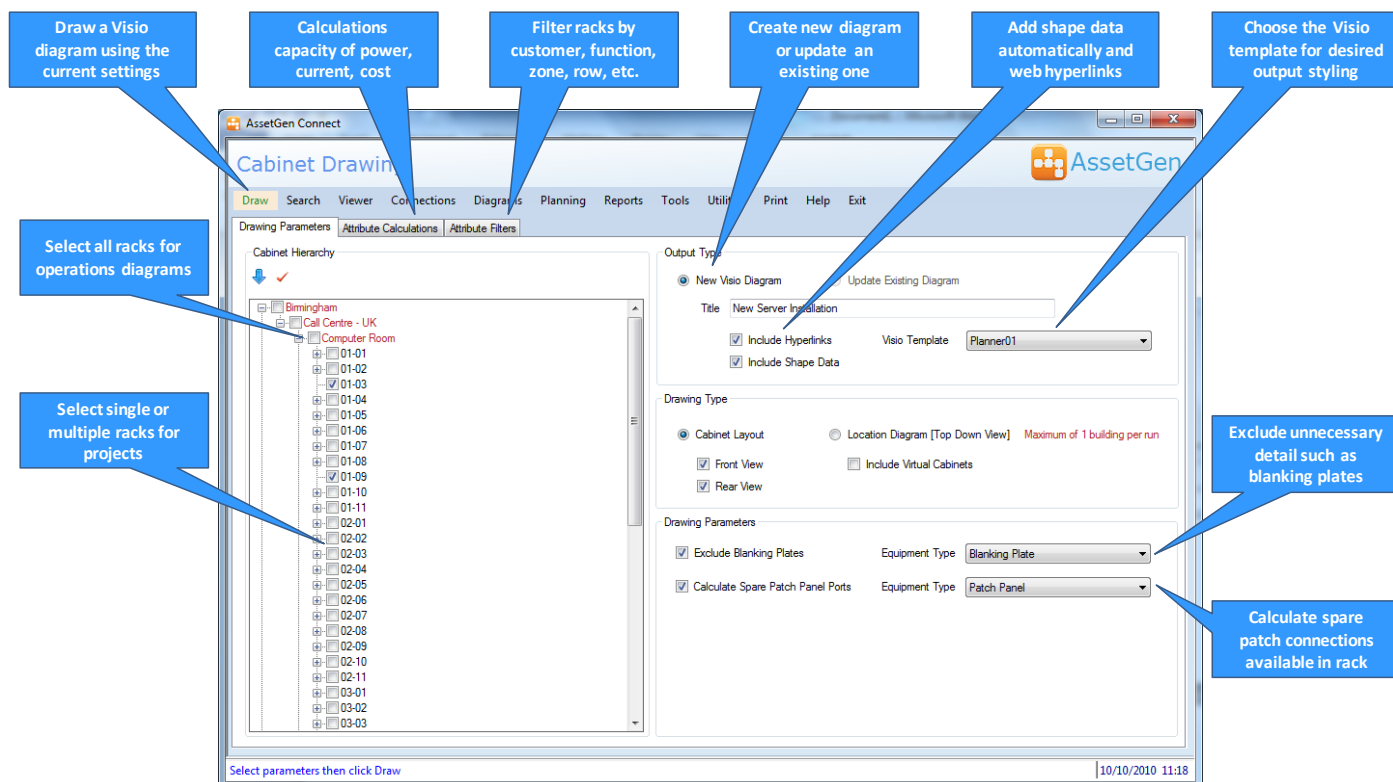
- Rack space by production, test, DR
- Billing for power used by customers
- Network ports used by customer
- Actual and planned rack allocation
- Disaster recovery coverage
- Project build lists
- Network capacity by zone, business unit



Export settings can be saved for management reporting as templates – giving great flexibility in use. There is a data loader feature which enables automated population of AssetGen Connect for initial set up.

## Automated Visio Floor Plans and Rack Diagramming

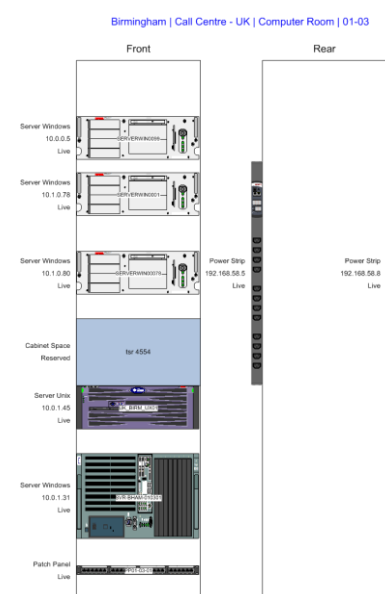
Let us draw Visio rack diagrams for you! Select one or multiple racks, hit draw – done. Adding a new piece of equipment to a rack, then producing an updated Visio rack diagram will take around 15 seconds. The screenshot below shows that you have many options for creating rack and floor plan diagrams for project and operational needs.



To make maximum use of Visio data graphics features for capacity dashboards we embed details such as the power and current used within racks, making it easy to spot overloads and risks.



Visio floor plan with data graphics for capacity, power feed and function

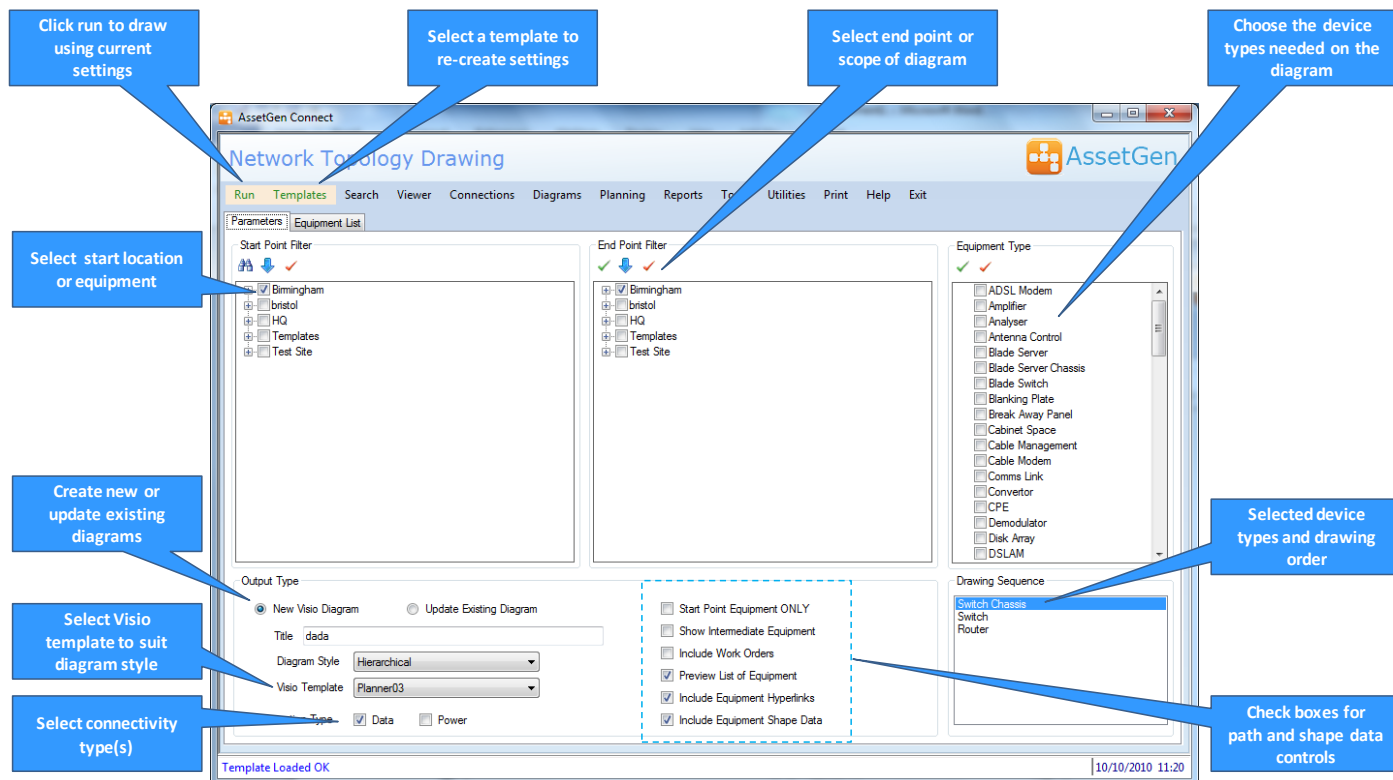


Rack diagram with IP addresses

Whether you want to produce a diagram quickly as part of a project change, or maintain large numbers of physical infrastructure diagrams AssetGen Connect will save 100s or 1000s of man hours. These Visio diagrams can be saved onto an intranet portal with the shape data and web hyperlinks back to the server version preserved.

## Automated Visio Network, Power and Other Topology Diagrams

We can help you quickly draw and maintain topology diagrams to suit many needs as the AssetGen system records device connectivity. This screenshot explains some of the many options we provide for topology diagrams that could be focused on LAN, WAN, SAN, power, video, voice, etc. or a combination of them all. The settings chosen can then be saved as a template and re-used for diagram checking and maintenance.



Topology maps of the following types can all be created and maintained from the same AssetGen source:

**LAN building diagrams**

**WAN diagrams showing site connectivity**

**Campus LAN connectivity**

**Single device connectivity**

**Multi-device diagrams eg. DMZ**

**Critical system links**

**Server LAN/SAN connectivity**

**Single points of failure & resilience**

**SAN storage diagrams**

**Backbone and floor cabling**

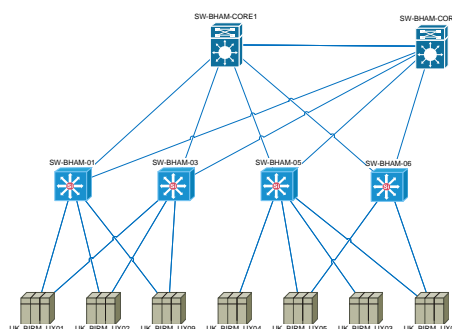
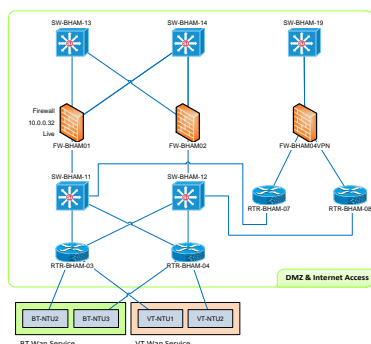
**Power distribution**

**Video and CCTV**

**End to end paths**

**Chassis/card connectivity**

**Network zones**



You choose - **Network only topology diagrams** or .... **Network overview with server connections** or.... **Both!**

The time saved gathering the knowledge, transferring the data to the diagram and then laying out for readability is huge. And then management want it updated every week! AssetGen Connect offers a better way for maintaining topology diagrams – especially if you have a multi-site environment. If you don't need the connectivity data, we also have the equipment extract option for architecture diagrams.

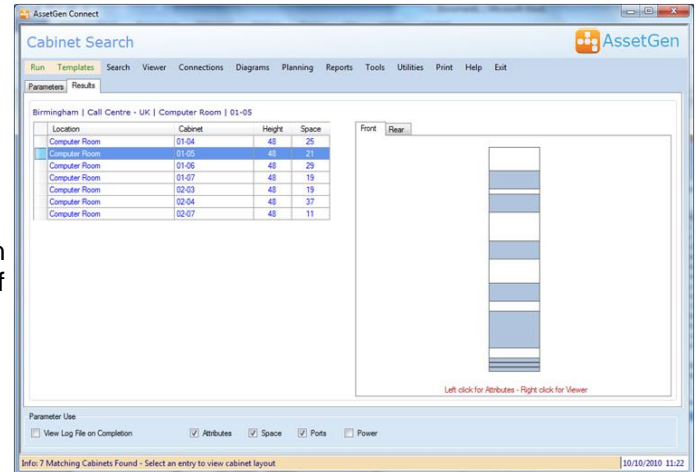
## Deployment Planning

Finding available space for servers, switches and other devices can be simplified by using the cabinet search facility. Allocating space may involve selecting cabinets on the basis of any, or all, of the following criteria:

- Location – building, rooms
- Cabinet function - server, network, storage
- Network Zone - internal, internet, customer, DMZ
- Connectivity - copper, fibre, power
- Power – limits, rated, design, actual (value or %)
- Zoning – Cooling zone limits

AssetGen Connect makes it easy to use any of these criteria in one simple process. The results shown on the right are a list of suitable cabinets, with each existing layout displayed.

Once created, the search criteria for a standard component can be saved as a template for re-use by anyone. Finding suitable cabinets for standard platforms only takes a few seconds; simple, quick and easy.

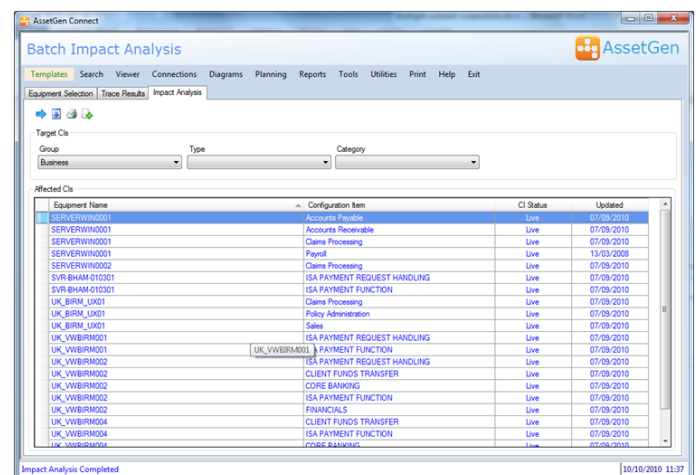


## Change Impact Analysis

Predicting the impact of a change or fault within a modern data centre is not easy. If a core switch has 200 ports, how long does it take to identify the business impact of a change? Our batch impact analysis feature reduces the burden of analysing typical changes involving IT infrastructure. For example;

- Power downs –room, cabinet, PDU, breakers
- Re-booting core LAN and SAN switches
- Platform or technology upgrades
- Firmware or OS patches on infrastructure
- Fault impact assessment
- Risks with moving cabinets or equipment

This change impact analysis combines environment, inventory, connectivity and service dependencies – **unique** to the AssetGen range. The screen shot shows both the servers and the business service impacts (provided with AssetGen SysMap) of a PDU power down in a data centre.



## Infrastructure Reporting

Reporting can be as simple or extensive as you wish. AssetGen Connect includes the Active Reports engine with both desktop and server versions to help produce reports and export in different formats. Over 30 reports are included as standard with AssetGen covering most common reporting requirements for system administrators and users:

- Audit trails by location, device and user access
- Cabinet capacity with inventory, space, connectivity and power
- Equipment inventory, status, port usage, partial connections

Filtering can be applied as required so a single report on port usage can be applied to multiple locations and equipment types.

Custom reports can be added if required and the export features covered earlier enable a wide variety of user reports.



## AssetGen Connect / SysMap Integration

If AssetGen SysMap is also installed on the same desktop or server platform, then users can quickly understand the system or service impact of a physical infrastructure change. When planning or communicating device changes, it's important to know who is impacted for change management. Integration features include:

- Device impact analysis
- Multi-device (or batch) impact analysis
- AssetGen Connect attributes visible from within SysMap
- Visio diagrams can have both Connect and SysMap web hyperlinks automatically inserted (server only)

AssetGen SysMap is licenced and installed separately.

## AssetGen Connect Licencing and Options

AssetGen Connect is available in desktop and server versions, both licenced by the number of equipment records. There is no limit on the numbers of ports or connections.

### Desktop Version

The desktop version is available to support 500, 1000, 2000, 5000, 10000 or unlimited devices.

### Server Version

The server version is available to support 1000, 2000, 5000, 10000 or unlimited devices.

There is no restriction on the number of users for web browser access. The server version comes with one AssetGen Connect client licence; additional clients can be purchased for extra "power users" or administrators.

To understand more about AssetGen Connect licencing, and upgrades between versions, please contact your sales distributor listed below.

## Desktop and Server Platform Requirements

AssetGen software is designed to work with standard Microsoft environments for both desktop and servers. For the Visio data graphics feature MS Visio 2007/10/13/16 Professional (not supplied) is recommended.

The desktop version is supported on Windows XP, Vista and Windows 7/8/10. The recommended server platform is Windows Server 2008/12/16 and SQL Server 2008/12/16. For browser access Internet Explorer V8 and above is recommended. Please refer to the technical FAQs on our web site for more details.

All trademarks acknowledged

---

*Developed by:*



AssetGen Ltd      Tel: +44 (0)8707 770717  
www.assetgen.com  
5 Butts Farm Courtyard, Poulton, Cirencester, GL7 5HY  
United Kingdom

---

*Sales Distributor:*



Square Mile Systems Ltd      Tel: +44 (0)8700 340770  
www.squaremilesystems.com  
sales@squaremilesystems.com